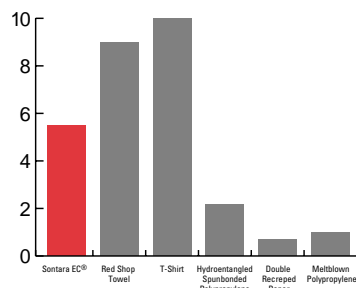
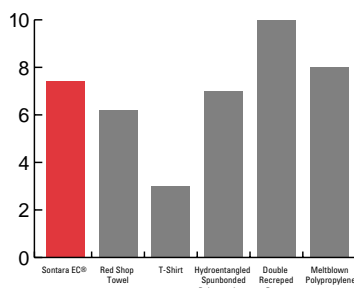


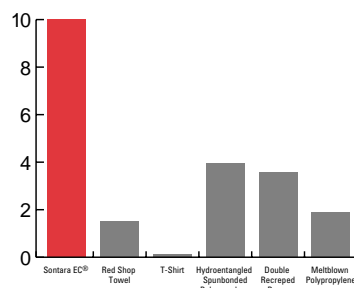
# High Quality, High Performance



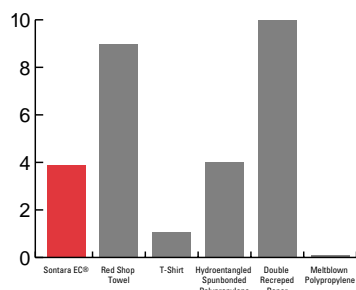
**DURABILITY (STRENGTH)**



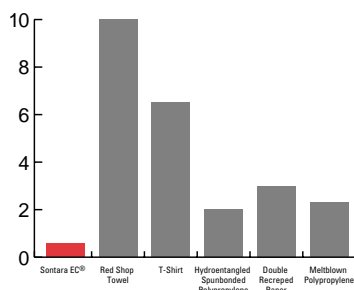
**ABSORBENT CAPACITY**



**ABSORBENCY RATE**



**FIBER LINTING**



**EXTRACTABLES**

*All graph scales are relative.  
Data available upon written request.*

We believe that this information is the best currently available on the subject. It is offered as a possibly helpful suggestion in experimentation you may care to undertake along these lines. It is subject to revision as additional knowledge and experience are gained. DuPont makes no guarantee of results and assumes no obligation or liability whatsoever in connection with this information. This publication is not a license to operate under, or intended to suggest infringement of, any existing patents.

Sontara EC® is a registered trademark of the DuPont company for its brand of spunlaced fabrics.

Sontara® products are manufactured under an ISO 9000 Series registration.

Copyright © 1999 E.I. du Pont de Nemours and Company. All rights reserved.

*For more information about this and other DuPont Sontara® wiper products, call 1-888-4 SONTARA.*

Distributed by:

For more information, call:  
**1-888-4 SONTARA**



**Sontara EC®**  
engineered-cloth wipers

DuPont Nonwovens  
Sontara® Technologies  
1002 Industrial Road  
Old Hickory, TN 37138  
e-mail: [sontara-tech@usa.dupont.com](mailto:sontara-tech@usa.dupont.com)  
[www.dupont.com/sontara/ec](http://www.dupont.com/sontara/ec)



# Sontara EC<sup>®</sup>

engineered-cloth wipers

A close-up photograph of the Sontara EC wiper material. The material is a textured, blue-grey fabric with a visible weave. The DuPont logo and the word "Sontara" are embossed into the fabric. The lighting creates a strong shadow across the middle of the image, emphasizing the texture and the embossed details.

**Engineered Tough  
For Better Performance.**



# Sontara EC<sup>®</sup> Wipers

## Engineered Tough For Better Performance



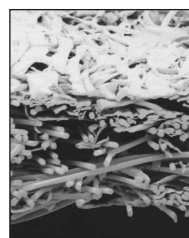
### ***Not Cloth, Not Paper...Something Totally Different***

Now there's a new alternative in wiping tools...Sontara EC<sup>®</sup> engineered-cloth wipers. Nothing beats them in all-around performance. Wet, dry or in between, Sontara EC<sup>®</sup> wipers are more versatile than cloth rags, stronger and more durable than paper, and less expensive in use than both. They're made under strict production controls to provide consistent quality, uniform size and packaging—all the performance advantages you expect from DuPont.



### ***DuPont Technology In Every Wipe***

Sontara EC<sup>®</sup> wipers are manufactured in a spunlacing process, using needle-like jets of water to “entangle” fibers into one of the finest wiping fabrics ever made.



*Cross Section/Magnification 25x*

Engineered specifically for wiping, Sontara EC<sup>®</sup> is a tough, durable material that resists abrasion and solvents, contains no binders or glues, is low-linting, and highly absorbent in water, oil and solvents.

### ***Cleans Up Virtually Anything***

Sontara EC<sup>®</sup> wipers are ideal for a wide range of applications, including aviation, manufacturing, painting, auto and machinery repair, printing, graphic arts, and many more.

### ***Everything A Wipe Should Be***



#### **Tough and Durable for Multiple Reuse**

In test after test, proven to be among the strongest—wet or dry. Can be reused over and over, washes easily, yet is inexpensive enough to treat as a disposable.



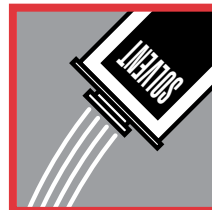
#### **Absorbent and Wipes Dry**

Soaks up to four times its weight in water, and also absorbs oil and solvents. Works fast for excellent wipe-dry.



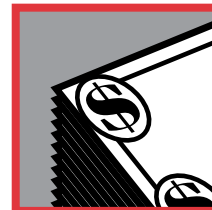
#### **Low-Linting**

Leaves behind virtually none of the lint you get with paper, and has no additives to contaminate surfaces. Plus, it's soft enough for polishing and finishing.



#### **Solvent-Resistant**

Stands up to MEK, isopropyl alcohol, and other solvents or cleaning agents without falling apart.



#### **Saves Money**

Lasts longer which means fewer wipers per task.

## Consistently Superior

A box of rags is like a grab bag—you never know what you're going to get until you open it. It could contain pieces with buttons, zippers or snaps, or that are too large or too small.

A box of Sontara EC® wipers holds no surprises. From box to box and wiper to wiper, every one is the same. We put the Sontara EC® brand on every wiper as your assurance of this quality.



## A Better Value All Around

Sontara EC® wipers are not only affordably priced, they're a significant wiping value—especially when you take into consideration their through-cost as determined by the time required to do the task, the number of wipers needed, and the performance characteristics of the wiping material.

## Cleaning Is Believing

When it comes to performance, quality and cost-effectiveness, Sontara EC® wipers are the smartest buy out there. Call today for a sample of Sontara EC® and try it for yourself.



## Go To The Source

For years, DuPont has provided the finest in high-performance spunlaced fabrics. Now, with Sontara EC® engineered-cloth wipers, you can get the highest-quality wiper from the people who invented spunlacing technology.



**Sontara EC®**  
engineered-cloth wipers

## Product Guide

SKU	ITEM	COLOR	PACKAGING	WIPER SIZE		WIPERS/ IND. PKG	TOTAL COUNT
PR811	Sontara EC® Creped	Blue	Flat	12" x 12"	(30cm x 30cm)	100/Polybag	1000
PR821	Sontara EC® Creped	Blue	1/4 fold	12" x 13.2"	(30cm x 34cm)	50/Polybag	900
PR822	Sontara EC® Creped	Blue	Pop-up	12" x 16.5"	(30cm x 42cm)	125/side	250
PR831	Sontara EC® Creped	Blue	Pop-up	9" x 16.5"	(23cm x 42cm)	100/box	800
PR832	Sontara EC® Creped	Blue	Pop-up	9" x 16.5"	(23cm x 42cm)	125/side	250
PR911	Sontara EC® Creped	White	Flat	12" x 12"	(30cm x 30cm)	100/Polybag	1000
PR921	Sontara EC® Creped	White	1/4 fold	12" x 13.2"	(30cm x 34cm)	50/Polybag	900
PR922	Sontara EC® Creped	White	Pop-up	12" x 16.5"	(30cm x 42cm)	125/side	250
PR931	Sontara EC® Creped	White	Pop-up	9" x 16.5"	(23cm x 42cm)	100/box	800
PR932	Sontara EC® Creped	White	Pop-up	9" x 16.5"	(23cm x 42cm)	25/side	250